



# Cybersecurity on SCADA: risk prediction, analysis and reaction tools for Critical Infrastructures

Service and tool developed and operated by :



## Software Checker



**Type:** *Vulnerability assessment tool*

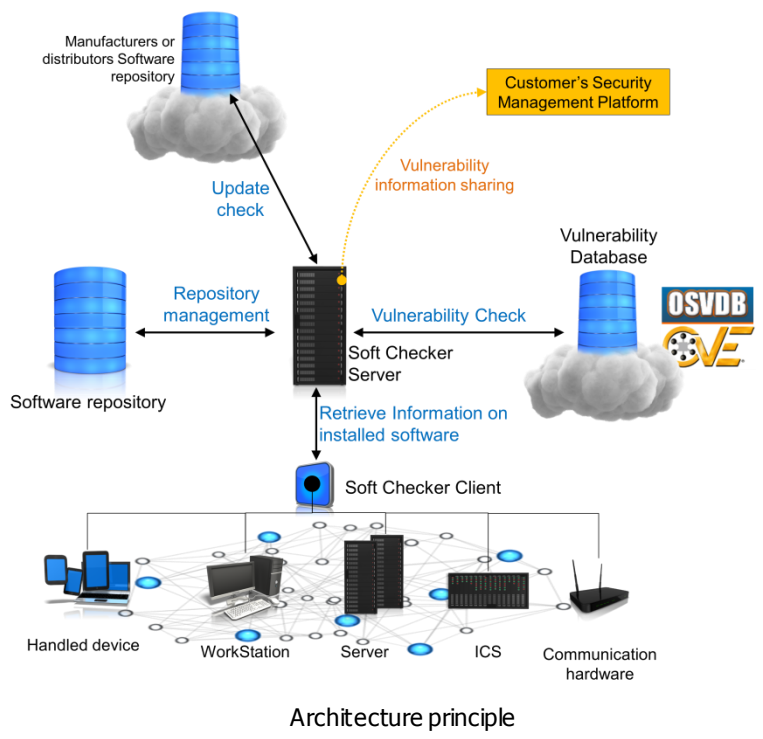
**Packaging:** *Light version (SW client + service)*  
*AllInOne version (client + server + service)*

### System requirements

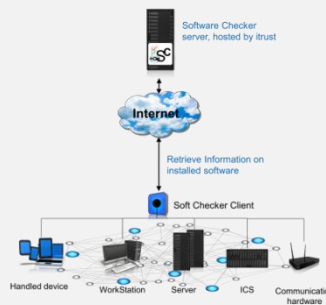
- All windows platform (XP,Seven,8)
- Internet connection required for all computer in the light version.
- Internet connection required for the internal server in the AllInOne version

### Main Functionalities

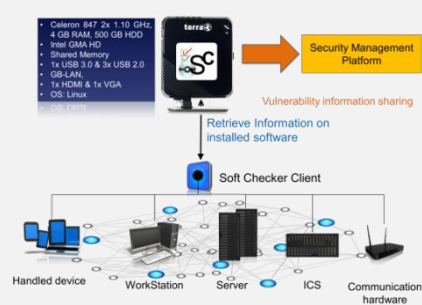
- Retrieve **regularly** information on software deployed on platform: *for example as soon as a components is connected to the network*
- Verify **regularly** the vulnerability state of these software
- Check the **last** update version of software
- Provide in option a central database of **trusted** link for update version.
- Provide a central point of **vulnerability management**



### Deployment



- Light version**
- Clients are deployed on local devices.
  - Operation of the server is managed by itrust.
  - No connection with Security Management Platform



- AllInOne version**
- Clients are deployed on local devices.
  - Server deployed and maintained by itrust but operated by the owner
  - Communication with customer's security platform enabled